



2024 Annual Report



2024 was METRO's first full-year serving as a regional health system with nine health centers, one pharmacy and one administrative office. Each health center provides access to over 100 programs and services.

We saw consistent demand for key services as a result of increased local access.

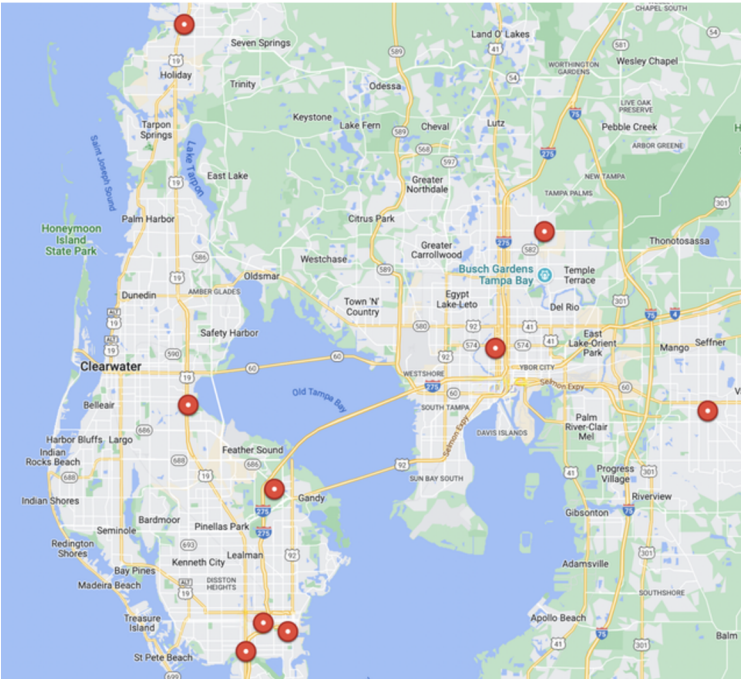


This was our impact.



METRO INCLUSIVE HEALTH





31,085
LIVES
TOUCHED



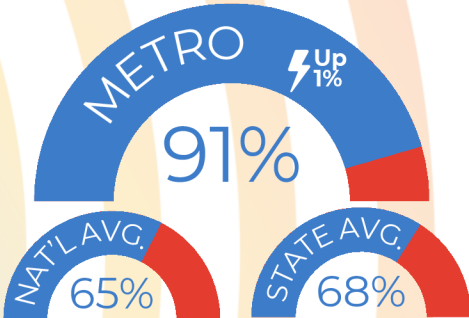
31,761
TOTAL HEALTH
CENTER VISITS



2,992
TOTAL NEW
PATIENTS

4,352 ⚡^{Up 3.7%}
HIV+
PATIENTS

At 91%, Metro Inclusive Health continued to lead state and national averages in viral supression rates.



100%
HIV+
LINKED TO
CARE

89%
HIV+
RETAINED
IN CARE



1,778
BEHAVIORAL
HEALTH & PSYCH
PATIENTS

321 ⚡^{Up 33%}
NEW PSYCHIATRIC
CARE PATIENTS

12,956
BEHAVIORAL
HEALTH & PSYCH
VISITS



Therapy options focused on non-habitual medication fueled new growth in psych patients.

A surge in syphilis, gonorrhea and other STIs increased the need for local testing. METRO implemented walk-in and next day STI testing appointments at all health centers with rapid results available at the Seminole Heights and North St. Pete locations, in about 90 minutes.

22,249 STI TESTS PERFORMED

**36%
RAPID RESULTS**

**64%
STANDARD 3-5 DAYS**

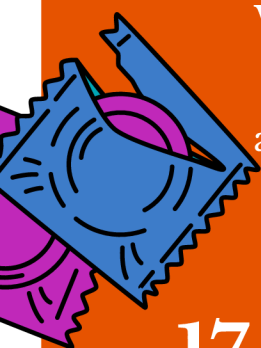


**1,638
PrEP
PATIENTS**

**6,454
PrEP
VISITS**

**615 ⚡
NEW PrEP
PATIENTS**
Up 8%

Testing goes hand-in-hand with prevention. Health navigators maximize each testing experience to educate patients about PrEP and nPEP to prevent HIV and DoxyPEP to prevent common STIs.



With increased walk-ins at health centers, the sexual health outreach team was able to re-focus efforts on the most high yield opportunities.

⚡
Up 6%

17,601 INDIVIDUALS REACHED

704 OUTREACH EVENTS

135,542 CONDOMS DISTRIBUTED ⚡
Up 37%



8,298

**HIV
TESTS**

54

**NEWLY
DIAGNOSED**



\$769,244.48

Thanks to medical patients using Metro Inclusive Pharmacy or one of 60+ partner pharmacies to fill their prescriptions, thousands of dollars went back into our community in the form of medical care, medications and social services via our Copay it Forward™ program.

metro inclusive
pharmacy
COPAY IT FORWARD™



TB BJ THE BUSINESS OF
PRIDE

in Partnership with
TAMPA BAY
**LGBT
CHAMBER**

Metro Inclusive Health was selected as a **Business of Pride** honoree and, for the fifth consecutive year, voted **Best Local Health Center** by readers of **Watermark**.

2024
watermark's
wave
AWARD

153,000
NEW WEBSITE
VISITORS

572,715
WEBPAGE
VIEWS

1,807,433 SOCIAL MEDIA
IMPRESSIONS

~4,900
STICKERS
DISTRIBUTED



METRO
INCLUSIVE HEALTH

ST. PETERSBURG
TAMPA
CLEARWATER
NEW PORT RICHEY
BRANDON
METROTAMPABAY.ORG